

mProfile	A ² (mm)	W (mm)	T ³ (mm)	H ⁴ (mm)	Mx (mm)
CRG 35/9/10	7	9	1	10	2 (+1/-1)
CRG 35/9/20	7	9	1	20	2 (+1/-1)
CRG 35/9/30	7	9	1	30	2 (+1/-1)
CRG 35/9/40	7	9	1	40	2 (+1/-1)
CRG 35/9/50	7	9	1	50	2 (+1/-1)
CRG 35/9/60	7	9	1	60	2 (+1/-1)
CRG 35/9/70	7	9	1	70	2 (+1/-1)
CRG 35/9/80	7	9	1	80	2 (+1/-1)
CRG 35/9/90	7	9	1	90	2 (+1/-1)
CRG 35/9/100	7	9	1	100	2 (+1/-1)
CRG 35/10/10	7	10	1,5	10	2 (+1/-1)
CRG 35/10/20	7	10	1,5	20	2 (+1/-1)
CRG 35/10/30	7	10	1,5	30	2 (+1/-1)
CRG 35/10/40	7	10	1,5	40	2 (+1/-1)
CRG 35/10/50	7	10	1,5	50	2 (+1/-1)
CRG 35/10/60	7	10	1,5	60	2 (+1/-1)
CRG 35/10/70	7	10	1,5	70	2 (+1/-1)
CRG 35/10/80	7	10	1,5	80	2 (+1/-1)
CRG 35/10/90	7	10	1,5	90	2 (+1/-1)
CRG 35/10/100	7	10	1,5	100	2 (+1/-1)

TECHNICAL DATA

Material of guide ¹	AISI 304 (1.4301)	AISI 316 (1.4401)	Aluminum (6063 or 5754)	Brass
Designation	CRG-SS304	CRG-SS316	CRG-AL	CRG-BR
Standard length	2.44 and 3.0 meters			
Material of insert	EPDM (UV+O ₃ – resistant)			
Color of insert (RAL)	charcoal	pewter	light grey	earth
	light smoke	sandstona	linen	light beige
	alabaster	milky white		

¹ On request, the profile can be manufactured from other materials and alloys (please ask for more information).
² The standard thickness of the insert is 7 mm. Insert 4, 12b 27 or 27 mm is available on request.
³ Standard thickness of metal.
⁴ The profile can be manufactured to any required height.

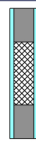
EXECUTION OPTIONS

The profile can be executed in two variants:

1. Insertion of the entire height of the profile.
2. Insert separates foam gasket (this variant is more economical without loss of performance characteristics).

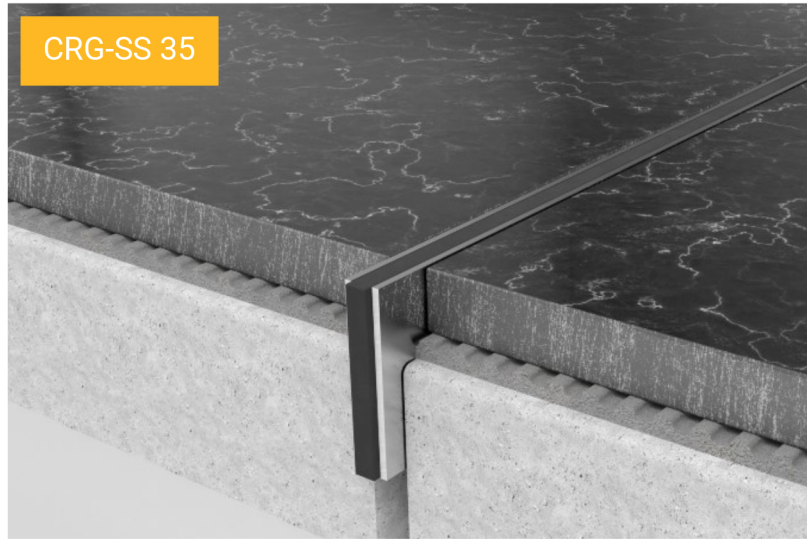


OPTION 1



OPTION 2

CRG-SS 35



CRG-AL 35



CRG-BR 35



EXTRAS

Additionally, the profile can be supplied with special anchors for installation.

